

catholic office for the protection of children and vulnerable adults

**annual report 2006**

## Catholic Office for the Protection of Children and Vulnerable Adults (COPCA)

### Annual Report 2006

Copyright © Catholic Office for the Protection of Children and Vulnerable Adults 2006

All rights reserved. No part of this publication may be reproduced or stored or transmitted by any means or in any form, electronic or mechanical, including photocopying, recording, or any information storage and retrieval system, without prior written permission from the publisher.

Further copies of this report are available from:

COPCA

12, St Paul's Square

Birmingham B3 1RB

Telephone: +44 (0)121 233 1963

[admin@copca.org.uk](mailto:admin@copca.org.uk)

This report is also available on line at

[www.copca.org.uk](http://www.copca.org.uk)

# contents

Foreword by Archbishop Vincent Nichols	5
Executive Summary	6
<b>Section 1</b>	
National Policy Development	9
<b>Section 2</b>	
Implementation	16
Guide to Tables	21
COPCA'S aims for 2007	31
<b>Appendices</b>	
<b>appendix one</b>	
The COPCA Management Board	32
<b>appendix two</b>	
COPCA Staff	33
<b>appendix three</b>	
Working Group Members	34
<b>appendix four</b>	
National Policy Development Process	35
<b>appendix five</b>	
COPCA annual accounts 2006	36

If you need to make contact with a child protection co-ordinator in a diocese or religious congregation, contact details are available from the relevant diocese or religious congregation.

# foreword

by Archbishop Nichols



*Archbishop Nichols*

On behalf of the Board of Management of the Catholic Office for the Protection of Children and Vulnerable Adults (COPCA) I am pleased to present this Report for 2006. This is the fifth time that the Director of COPCA, Eileen Shearer, has presented a public report on the work achieved in the previous year. On behalf of the Board, I thank Eileen and her dedicated staff for their hard work and fine achievement.

The work covered in this Report is not just that of COPCA, the central office. It covers work done in every part of the Catholic community: parishes, societies, groups, dioceses, religious orders and congregations. The role of COPCA is simply to oversee and advise on this work, according to the national policies that are being put into place. So thanks are due to thousands of people who contribute to this sensitive and important work. These people come from every walk of life, every facet of the life of the Church. There is, indeed, a 'One Church' approach being fashioned in this work.

This Report for 2006 tells a story of steady progress in many aspects of this work. This progress is well indicated in the tables and statistics, and these provide a clear indication of priests being reinstated after due and sometimes lengthy processes. This progress is also to be seen in more hidden ways, change that is less measurable, and in achievements not reported here. Great strides have been made in working co-operatively with many statutory bodies not only in the investigation and initial resolutions of allegations of abuse, but also in the management of past offenders and their participation in the life of the community. These are time-consuming tasks, not recorded here, for which I thank all concerned. In addition, there is considerable ecumenical cooperation to be found, with Christian Churches supporting and assisting one another.

This Report is a clear account of ongoing good work. It will bring reassurance to many. It is a cause for proper satisfaction for all. Yet there is plenty to be done in the years ahead. This, too, is made clear here.

*+ Vincent Nichols*

✠ Vincent Nichols  
Archbishop of Birmingham  
Chairman COPCA  
April 2007

# executive summary



*Eileen Shearer, Director COPCA*

This is the 5th annual independent Report to the Bishops' Conference and the Conference of Religious in England & Wales on the progress that has been made in implementing the recommendations contained in *A Programme for Action* (Lord Nolan, 2001). 2006 has seen continuing efforts to this end throughout the Catholic Church, as well as the establishment of the recommended 5 year review of this work. The Cumberlege Commission is undertaking this work ([www.cumberlegecommission.org.uk](http://www.cumberlegecommission.org.uk)).

This review has offered the valuable opportunity to look back on the substantial achievements made by the Church over the last 5 years, in terms of a sea change in responding to allegations, establishing clear accountability, and ensuring Local Child Protection Representatives are the norm at local level, to take forward the vital work of prevention through good practice.

Next year's Annual Report will include a focus on implementing any recommendations for change, as we begin the next stage of the journey to reach the model of best practice envisaged by Lord Nolan.

The contents of this Report on 2006 show continued steady progress in this sensitive and complex work.

The 2006 Report shows that

- Over 18,000 more CRB checks have been completed on
  - clergy and religious;
  - all those working in the child protection system;
  - all employees working with children and vulnerable adults;
  - all new recruits;
  - existing volunteers.
- Training has continued to be a priority, with almost 440 training events held for around 5300 people during 2006.

Since 2003, over 19,000 people have now received training.

- Local Child Protection Representatives are in place in all but 307 of 2,400 parishes. These volunteer roles act to:
  - Raise awareness among parishioners and act as a listening post for anyone with concerns;
  - Help carry out CRB checks in parishes;
  - Make sure all events and activities for children or vulnerable adults are safe.
- Diocesan Child Protection Commissions, which are responsible for all child protection matters, are in a position to provide independent expert advice to Dioceses through the membership of Police, Social Services or NSPCC and the Probation Service.
- Regional Religious Child Protection Commissions have been newly established in 2006, with external professional advice available from their members in the Police, Probation and Child Protection Social Work.

# executive summary

The Church is committed to creating a culture of vigilance and transparency in its efforts in protecting vulnerable people, and it is a measure of our success that this 2006 Report shows that people have had confidence in the Church to come forward to report their concerns about abuse. As in previous years, it is clear that few cases result in prosecution, and the need to ensure that the Church exercises its duty of care to protect the public remains a priority in these circumstances.

## Total Number of Reports

- In 2006, returns received from Dioceses and Religious Congregations reported that 41 allegations of abuse (of all types, and committed by volunteers, employees, religious and clergy) were passed on to the Police. These cases involved 43 alleged victims, and 41 alleged offenders.
- In 2005, 60 reports of alleged abuse (of all types, and committed by volunteers, employees, religious and clergy) were passed on to the Police. These cases involved 75 alleged victims, and 58 alleged offenders.
- In 2004 100 reports of alleged abuse (of all types, and committed by volunteers, employees, religious and clergy) were passed on to the Police. These cases involved 153 alleged victims and 100 alleged abusers.
- In 2003, the comparable figures were 62 reports, involving 86 alleged victims and 62 alleged offenders.

## Incidents occurring prior to 2006:

- 26 of the 43 alleged victims in the reports made in 2006 reported abuse that took place before 2006, covering a period of 45 years. This includes a number of alleged abusers who are now dead.

## Incidents occurring during 2006:

- 17 alleged victims reported abuse occurring in 2006; of these, 6 (5 in 2005) were allegedly committed by clergy: all were related to sexual abuse (compared to 2 in 2005).
- Of the further 11 instances of alleged abuse taking place in 2006, 1 related to religious and 10 (compared with 14 in 2005) were against employees, volunteers and parishioners.

Note: There are approximately 5600 priests and 6000 religious working in England and Wales.

## Progress Report on Actions taken by the Statutory Authorities in 2006 & 2005: 2006:

Of the 41 reports in 2006, 24 resulted in no further action by the Police.

14 are still under consideration and investigation, 1 is awaiting a court hearing, 1 resulted in a Police caution and 1 resulted in a judicial sentence. 3 of these were reported to the Protection of Children Act List.

**The Child Protection Commission membership is balanced and consists of many Professionals from a plethora of backgrounds. Each provides a valuable and considered contribution to our Diocesan approach.**

# executive summary

## 2005:

Updated Information on only 53 of the 58 alleged abusers from 2005 was reported to COPCA in 2006. Thus, of these 53 alleged abusers from 2005, 36 resulted in no further action by the Police. 8 are still under consideration and investigation, 4 are awaiting court hearing, 3 resulted in a Police caution, 1 resulted in a conviction and 1 is remanded in custody. 1 was reported to the Protection of Children Act List.

## Progress Report on Actions taken by the Church in 2006:

In all cases where allegations are received and reported to the Police, the individual is temporarily withdrawn from their role and remains so until the close of the statutory investigation. Where concerns remain regarding risk, an assessment of the risk is undertaken, sometimes involving independent experts. Recommendations are made by Child Protection Commissions as to the steps required to manage the risk identified safely. In some cases this is not necessary, for example where the allegation is unfounded, or where the accused is deceased.

Thus, of the 20 allegations of abuse against clergy in 2006 the position at the end of the year is: 7 remained temporarily withdrawn from active ministry, 1 was undergoing a risk assessment. 2 had been reinstated, 4 were still under investigation by the Police. In 6 cases no further action was required, for example because the individual was deceased.

## Conclusion

This summary of information about the progress in putting in place preventative measures and on responding to allegations of abuse received in 2006 continues our practice of working transparently and accountably in all our work.

It also highlights the continued efforts of the many workers, both paid and voluntary, across the Dioceses and Religious Congregations, and gives a flavour of their considerable achievements in continuing to create a culture of vigilance and a model of best practice in protecting vulnerable people of all ages, and in preventing abuse.

**“The vast majority of Local Child Protection Representatives and members of the clergy attended child protection training sessions. We have received some positive feedback from those sessions, along with some positive suggestions on additional materials to include in the training programme for 2007.”**



# section one

## 1. National Policy Development

2006 has seen further progress in implementing the policy initiatives of the Recommendations of Lord Nolan's *A Programme for Action* (2001).

In addition to finalising and agreeing to implement several major new policies, a number of amendments were agreed to existing policies, pointing up the importance of continual review and updating of policies and procedures to take forward our aim of becoming "a model of best practice" in this area.

The new policies issued were under development in 2005.

- The process of self audit and a simple self audit instrument was approved by the Conference of Bishops and the Conference of Religious in May 2006, following a pilot of the self audit instrument in two Dioceses and two Religious Congregations (Recommendations 15, 17–19). We are grateful to them for their help in the development of the instrument and this important stage in the work of implementing *A Programme for Action*.

The Bishops' Conference and the Conference of Religious agreed that the self audit process should be completed by Autumn 2006. It was agreed that, for the Religious, 22 selected Congregations would complete the self audit process in 2006, in view of the early stages of development of Regional Religious Child Protection Commissions, with further groups of Religious Congregations undertaking the self audit in sequence over a three year cycle.

Please see Paragraph 10 p14 for the findings of this first self audit process.

The process of self auditing involves the Bishop or Congregation Leader, working in conjunction with the Chair of the Child Protection Commission and the Child Protection Co-ordinator (and Officer where relevant). Where the audit shows that there is a gap in policy implementation, the instrument provides an action plan section, which is reviewed by COPCA. COPCA reports the summary findings and gives each Diocese/Religious Congregation feedback on the level of consistency with national policy, and a list of action points. Overall findings are reported to the Bishops' Conference and to the Conference of Religious.

- Healing the Wound (II): The National Policy for the Support of those who have suffered abuse and those accused of abuse was issued in March 2006 (Recommendations 71-76). Since this policy was approved, some questions have been raised about legal implications. Further advice is being sought to resolve these.
- In 2006 the Bishops' Conference and the Conference of Religious approved the Guidance document in relation to reviewing Past Cases (Recommendation 70 of *A Programme for Action*). They agreed that Dioceses would initiate this piece of work by the end of 2006. For Religious Congregations, whose child protection structures are at the very early stages, it was agreed that it would not be feasible for them to carry out this exercise until their Child Protection Commissions are better established (see Paragraph 3 p11).
- The National Policy on Vulnerable Adults (*A Programme for Action*, chapter 2, paragraph 2.2.1) has progressed during 2006, albeit not as quickly as we would have liked because of staff vacancies, both administrative and professional, within COPCA.



*Adrian Child, Assistant Director*

## section one

However, all the Child Protection Policies have now been reviewed with a view to incorporating within them the requirements of Vulnerable Adults policies. Revisions have been made to the policy on Responding to Allegations in order to comply with current legislation and government guidance in respect of vulnerable adults. Draft documentation will be presented to the COPCA Management Board in early 2007.

- A national policy to ensure that risks are appropriately managed when Clergy and Religious are placed outside their Diocese or Congregation of origin has been developed at the instigation of Diocesan Child Protection Co-ordinators. This policy is called the Cross Boundary Placement Policy and liaison has taken place with the Catholic Church in Scotland and Ireland, who have both agreed to adhere to it in relation to any placements they might make in England and Wales.

In addition to these main policy development initiatives, progress has been made in relation to the following issues.

- The Canon Law Working Group was established by the Bishops' Conference and the Conference of Religious, in consultation with the Canon Law Society and COPCA.

The Group has continued to work on a number of documents for presentation to the Bishops' Conference and the Conference of Religious in 2007 with a view to establishing the canonical framework for national policies throughout the Church.

- The Responding to Allegations policy has been updated in line with government guidance in relation to temporary removal from role and the definition of false allegations.
- Reminders have been issued to all Dioceses and Religious Congregations of the need to ensure that Testimonials of Suitability forms are used in all cases where Clergy and Religious are coming to work in England and Wales from abroad.
- In response to specific feedback from Survivors' groups about "Principles for speaking with adult survivors of sexual abuse" COPCA decided to remove the document from the website.

## 2. CRB Disclosures

- A national policy on roles requiring CRB Disclosures has been under discussion throughout 2006 and will be formally approved by the Bishops' Conference in early 2007.
- Problems encountered with the invoicing of CRB Disclosures which have absorbed a great deal of time for COPCA and the Finance Department of CaTEW were finally resolved in 2006, with the aid of the CRB Credit Control Department. We are grateful for the help of all concerned in resolving this issue. There remain some delays in Dioceses in forwarding information with delays ranging from March 2005 to the present day.
- An ecumenical training programme was instituted to train a group of trainers in undertaking risk assessments when CRB Disclosures reveal potentially worrying information. This work has been carried out by a sub group of the Churches Forum<sup>1</sup> and funded by the Catholic Church Insurance Association. We are grateful to both these bodies for their support in this important work.



*Sally Sanderson, Business Manager*

<sup>1</sup>The Churches' Forum is a forum to support, encourage and exchange ideas on the protection of children and vulnerable adults in the Christian community, and to promote Safeguarding to represent the concerns of members in the UK for example, to Government Departments and Statutory agencies.

# section one

- COPCA has held its first formal training day for Counter Signatories since the CRB Disclosure system was introduced in 2003; all Counter Signatories belonging to the Registered Body led by COPCA will receive such training in future as a matter of course.
- Throughout the year we have dealt with several issues relating to security and confidentiality of data, which is of the highest importance, and have confirmed the identity verification process required to ensure that Counter Signatories' legal responsibilities are demonstrably and fully carried out.

## 3. Religious Congregations

- Throughout 2006 we have been well supported by the CoR /COPCA Liaison group and by Conference of Religious representatives on the COPCA Management Board. We are grateful for their help in ensuring that the vital work of establishing the four Regional Religious Commissions took place in 2006, especially in view of the pressure on Conference of Religious staffing resources this year.
- Each of the Regional Religious Commissions is based on the same model as the Diocesan Commissions, with an independent child protection expert as Chair, and with membership from Police, Probation and Child Protection Social Work. The four Commissions are based in the North West, the North East, London South Coast and London Midlands. Not all Religious Congregations are yet "signed up" to a specific Commission but the process is continuing apace. COPCA and the COPCA Management Board are extremely grateful for the assistance and support of the Conference of Religious and all the external agencies without whom these Commissions could not have been established.
- These Commissions differ from Dioceses in having several Child Protection Co-ordinators attached to them. Each of these Child Protection Co-ordinators in turn holds responsibility for a group of up to twenty Religious Congregations, many of which are very small. In each Congregation responsibility for Child Protection is held by a Child Protection Link Person.
- The Terms of Reference for Regional Religious Child Protection Commissions have been revised to take into account their different needs, and job descriptions and person specifications for Child Protection Link Persons have been developed.
- In September 2006, a very helpful meeting was held with the Association of British Contemplatives in Yorkshire. COPCA's role and work to date was described and well received. The inclusion of Religious in enclosed settings is important and further work will be undertaken on this during 2007.



*Claire Johnson, PA to Director*

## 4. Developing Internal Relationships

- The Learning Sub Group, established in 2005, met twice in 2006. Terms of Reference were drawn up and agreed at the COPCA Management Board. Unfortunately, the Chair, Fr David Smolira SJ, was unable to continue in the role due to a posting abroad. Helen Kenward, a member of the Management Board, has kindly agreed to replace him.
- In September 2006, a first meeting of the Diocesan Child Protection Commission Chairs was convened by COPCA, which was well attended and experienced as a helpful meeting. The meeting was attended by the Director of COPCA, and the Chair and Vice-Chair of the COPCA Management Board; various matters were discussed including the forthcoming Cumberlege Commission, accountability issues within Dioceses, resources, membership of Commissions, responding to cases where no statutory investigation has taken place, and engaging all the Clergy in the work of child protection.

# section one

It was agreed to hold such national meetings on an annual basis, and subsequent correspondence with Chairs revealed an interest in holding regular regional meetings of Chairs with COPCA staff, which will be helpful in establishing an effective professional dialogue to ensure consistent implementation of national policies, and the review of national policies. It was agreed that the Chairs of the four Regional Religious Commissions would be invited to subsequent meetings.

- During 2006 the Diocesan and Religious Child Protection Co-ordinators met together for the first time to discuss issues of mutual relevance; the whole group also met the Chair and Vice-Chair and members of the COPCA Management Board.
- In addition, national meetings of the Diocesan and Religious Administrators have been set up with the COPCA Business Manager on a regular basis, in order to share information and best practice.

## 5. Training

- A training sub committee has been proposed and approved by the Management Board but it has not been possible to find a suitable chairperson for this group. The draft COPCA Business Plan for 2007 includes the task of developing a national training strategy for child protection.
- A national training pack for delivery to parish workers is being developed based on the Diocesan pack produced in Salford Diocese. This will be an invaluable resource and we are extremely grateful to staff at Salford Diocese for the work which they have done on this project.
- During 2006 a number of training sessions, agreed as part of the training plan for Child Protection Co-ordinators and Officers, had to be postponed more than once as there were insufficient participants. These included a CRB workshop for the Religious and a Case Recording course.

## 6. External Relationships

- 2006 has seen a number of important new relationships and networks established between COPCA, on behalf of the Catholic Church's child protection system, and key external organisations. These include important work with the Association of Chief Police officers (ACPO), and with senior officials at the DfES, including work with officials for the Protection of Children Act and Protection of Vulnerable Adult Lists.
- COPCA and Diocesan child protection staff were able to promote the work of the Church in the field of child protection through workshops and presentations to the national NOTA Conference (The National Organisation for the Treatment of Abusers).

Our work has also been recognised in other ways.

- The Director of COPCA was appointed to the Panel of Experts which meets under the chairmanship of Sir Roger Singleton to advise the Secretary of State for Education on cases referred to List 99. This is the list which prohibits unsuitable people from teaching or working with children.
- Two of our Child Protection Co-ordinators, Keith McDonogh (Wrexham Diocese) and Fr Peter McGuire (Hallam Diocese), were invited to attend a reception at Downing Street and were photographed with the Prime Minister.



Left: *Fr Peter McGuire with Prime Minister Tony Blair*



Right: *Keith McDonogh with Prime Minister Tony Blair*

# section one

## 7. Conferences

- Our successful internal National Conference for 110 people entitled *Partnership: Effective Risk Management*, was held from 1st–3rd March 2006 at the new conference facilities at Swanwick, Derbyshire.
- Members of the COPCA Team and Board, along with representatives from the Diocesan and Religious Child Protection Co-ordinators and Officers, attended the Anglophone Episcopal Consultation on Child Protection at the Vatican in Rome in May 2006. The meeting was attended by members of the Congregation for the Doctrine of the Faith, with whom there is a very close working relationship. Cardinal William Levada, its newly appointed Prefect, attended part of the meeting.

## 8. The Cumberlege Commission

- *A Programme for Action* (Recommendation 83) recommended that progress should be reviewed after five years. The Cumberlege Commission has been established in 2006 in order to carry out this review. The Commission is chaired by Baroness Cumberlege and the vice chair is Baroness Butler-Sloss. Full information about the membership and work of the Commission can be found on their website at [www.cumberlegecommission.org.uk](http://www.cumberlegecommission.org.uk).
- The Commission's terms of reference are:
  1. To review the implementation of the Nolan Report, *A Programme for Action*, both nationally and locally, in the dioceses and religious congregations.
  2. To make any recommendations for change taking account of statutory and good practice developments since the publication of the Nolan review.
  3. To consider the role of the central office (COPCA) in delivering these and any outstanding Nolan recommendations.
- The Cumberlege Commission was launched on 11th July 2006 at a keynote conference in London, which was chaired by Archbishop Vincent Nichols and attended by HE Cardinal Cormac Murphy-O'Connor. Speakers included Rev Dr John McDade SJ, Brian Appleyard, the Director of COPCA and Baroness Cumberlege.
- Following this, the process of collecting evidence continued through to December 2006. The Director of COPCA made a presentation to Commission members, and the Director and the COPCA Board, represented by the Chair and Vice-Chair, attended the Commission to give evidence and respond to questions.
- The Cumberlege Commission report is expected to be issued in Autumn 2007.



Baroness Cumberlege

**“Implementing Creating a Safe Environment has meant additional work for volunteers and Local CP Reps but has made them more aware of the problems that can occur when being in charge of children.”**



# section one

## 9. Issues For Attention

- The procedures for ensuring that supply priests and those entering England and Wales from abroad were not being followed with sufficient rigour. Reminders were sent out to Dioceses and Congregation Leaders, and the appropriate procedures were clarified.
- After some discussion, COPCA has confirmed its policy in relation to identity verification and the need, in line with the principles of Safe From Harm, to carry out interviews with all workers with children and vulnerable adults.
- Lourdes Pilgrimages have presented difficulties, both of volume for individual Dioceses, and, for those pilgrimages which are not related to a single Diocese, in the process of ensuring that Safe Environment policies and procedures, (including CRB checks and correct recruitment and selection processes) are instituted.
- In Dioceses and Religious Congregations, we noted that since COPCA began in early 2002, 18 Child Protection Co-ordinators are no longer in that role (including clergy, deacons and lay people) and 8 Child Protection Officers have moved on, with 2 Child Protection Officers arriving. It is important to find ways to maintain continuity so that knowledge is retained when changes are made.
- In Religious Congregations, congregation leadership and Child Protection Co-ordinator roles can change very rapidly. All these changes can disrupt the process of policy implementation and understanding of the child protection system and practice. We have developed a handover procedure to mitigate this.
- Annual Report returns have indicated for each year that few reports are made to the Protection of Children Act List. It is agreed policy to report all cases, in order to comply with best practice in preventing those who present a risk to children from seeking a role in other organisations.

## 10. The Self Audit Findings

The Self Audit process, which was piloted and run in Dioceses and selected Religious Congregations during 2006, has provided a helpful information base for moving forward developing practice in protecting vulnerable people and preventing abuse.

The experience of undertaking self audit processes is new in the Catholic Church, and it has run remarkably smoothly. The results of this first audit show that the Church has made good progress in implementing the policies, and give a clear understanding of what next steps are needed.

- In relation to Organisational Structures (2003), the audit revealed that arrangements for the professional supervision of Child Protection Co-ordinators and Officers have been difficult to put in place, and that attention to regular contact between Bishops and Child Protection Commission Chairs is needed in a few instances.
- The findings indicate that the policies on Responding to Allegations (2004) and Independent Risk Assessment (2004) are followed, although several respondents had not had to deal with any cases to date. Therefore it is more prudent to conclude that these policies are in some measure untested, and the value of the on-going work on clarifying the legal framework for such policies has been confirmed.



*Sophie Robbins, Team Secretary*

## section one

- The preventative policy, *Creating a Safe Environment* (2005), was generally well implemented given its stage of development, and in the absence of the proposed national “Parish Pack.” Work on developing local monitoring processes to provide confidence in the preventative system as a whole will be set in motion.
- The policy on Support for those who have experienced abuse (2006) was yet to be implemented in some cases, and others have still to formally appoint a support person. Support for those accused of abuse was slightly further advanced. This finding is not surprising given that the policy is of recent date.
- The findings of the audit have been sent to each Diocese and Congregation with suggestions and recommendations for action where appropriate. The key themes outlined above will be discussed with the Bishops’ Conference, the Conference of Religious and with Chairs of Child Protection Commissions during 2007.
- The Self Audit will be repeated in subsequent years on a three year cycle. In 2007 a group of Religious Congregations and Dioceses, where substantial progress is planned, will be audited.



*Keynote Conference – July 2006*

Child Protection Commission working well and committed to future developments including external ecumenical events and networking.

# section two

## Implementation

### Introduction

This Section of the Annual Report provides the public with information on key aspects of the work carried out at local level in Dioceses and Religious Congregations. It includes information on preventative work, as well as key statistics on the reports of abuse allegations (i.e. occurring within a Church setting only) received during 2006, and information on progress in cases dealt with in 2005.

This public report is simply a summary of key information provided to the Bishops and Congregation Leaders to enable them to ensure that this work is proceeding according to their plans. They, and COPCA, are acutely aware of those aspects of the work undertaken in Dioceses and Religious Congregations that are not described here, and which mere statistical information cannot truly represent.

For example, the vital tasks of making sure that support is provided for those who may have suffered abuse, of putting in place the preventative measures such as sound recruitment and selection processes, and the risk assessment of local activities, as well as ensuring that the risk presented by individuals is effectively managed, all demand much time and skill.

COPCA and its Management Board would like to express particular thanks for the commitment and dedication of all the office holders, employees and volunteers who have undertaken this difficult and often painful work during 2006 in Dioceses and Religious Congregations.

The information contained in the following tables and diagrams derives from Annual Report Returns sent to COPCA by Dioceses and Religious Congregations. In 2006, 20 out of 22 Dioceses and 141 out of 211 Religious Congregations sent in a Return by the final deadline and were included in the statistics that follow.

As in previous years, the information for Religious Congregations is incomplete in relation to responding to allegations, and this year for the first time, the information for Dioceses is also partial.

The information emerging from the Religious Congregations in relation to preventative work is as yet insufficient to inform consistent and accurate reporting in several areas, such as the appointment of Local Child Protection Representatives, Commission membership, and reported numbers of CRB Disclosures. Accurate figures for the latter have been obtained from the national database and included in this Report. Work on improving reporting in other areas will be undertaken through the new structures set in place for Religious Congregations in 2006.

Despite these limitations, the figures provided remain a valuable reflection of those aspects of the work on protecting children and vulnerable adults undertaken during 2006, and can still provide information about general trends. The gaps indicated above are flagged throughout the following Section of the Report.

## A. Prevention

### 1. Recruitment of Local Child Protection Representatives.

Table 1 below shows that in 2006, about 220 fewer parishes are recorded than in 2005, but about 130 fewer of these are recorded as having 1 or more Local Child Protection Representative in post in 2006 compared to last year, and fewer are in the process of appointment (about 360 fewer than in 2005).



## section two

This apparent reduction in activity could be accounted for by the lack of information from 2 Dioceses, but is also likely to reflect unpredictable turnover levels among Local Child Protection Representatives, the changes that follow alterations to parish boundaries, and, in a few instances, staffing shortages where delays in recruitment to Diocesan Child Protection posts have occurred.

Overall, the picture is of activity in this area at a broadly similar level to 2005.

**Table 1**

<b>Diocesan Returns</b>	<b>2006</b>	<b>2005</b>
Number of Parishes	2385	2604
Number of Parishes with 1 LCPR or more in post as at 31st December	2078	2428
Number of LCPRs formally appointed/in process during the year	254	620
Number of Parishes without LCPRs	307	176

*\* Note that these figures exclude statistics from 2 Dioceses*

### 2. Criminal Record Bureau (CRB) Disclosures

Table 2 and Figures 1 and 2 below show the trend in the volume of CRB Disclosures processed in Dioceses and Religious Congregations, and the number of blemished\* Disclosures arising from these. It is clear once again that the latter remain a very small proportion of the total, hovering fairly consistently at around half of 1%. Of these, in only 13 instances did they lead to a decision not to appoint an individual.

The number of Disclosures processed in 2006 appears to have reduced slightly (by under 400); however, the national database records indicate that a very similar number of Disclosures have been processed, so the reduction is more apparent than real.

Levels of activity were rising steadily in previous years as the system became familiar and resources were made available; this year it has remained steady, which may indicate that this is the maximum level of activity possible within resources. If true, this has implications for progress towards the targets set for processing all existing volunteers.

#### **Definition of Blemished Disclosure**

A "Blemished" Disclosure contains details of all convictions and cautions. Please note however that these are not necessarily specifically related to the protection of children and vulnerable adults and therefore may not result in a non-appointment.

# section two

**Table 2**

	2006			2005			2004			2003		
	CRB Checks Initiated	Blemished Disclosures	% of Total Checks	CRB Checks Initiated	Blemished Disclosures	% of Total Checks	CRB Checks Initiated	Blemished Disclosures	% of Total Checks	CRB Checks Initiated	Blemished Disclosures	% of Total Checks
<b>Total</b>	18148	71	0.39	17763	99	0.56	14083	95	0.67	5298	39	0.74
<b>By Dioceses</b>	16950	67	0.40	16534	68	0.41	11313	70	0.62	3309	16	0.48
<b>By Religious</b>	1198	4	0.33	1229	31	2.5	2770	25	0.9	1989	23	1.16

\*Note Diocesan CRB checks data is based on 20 Dioceses

\*\* 2006 & 2005 Religious CRB check volumes extracted from National Database

# section two

Figure 1

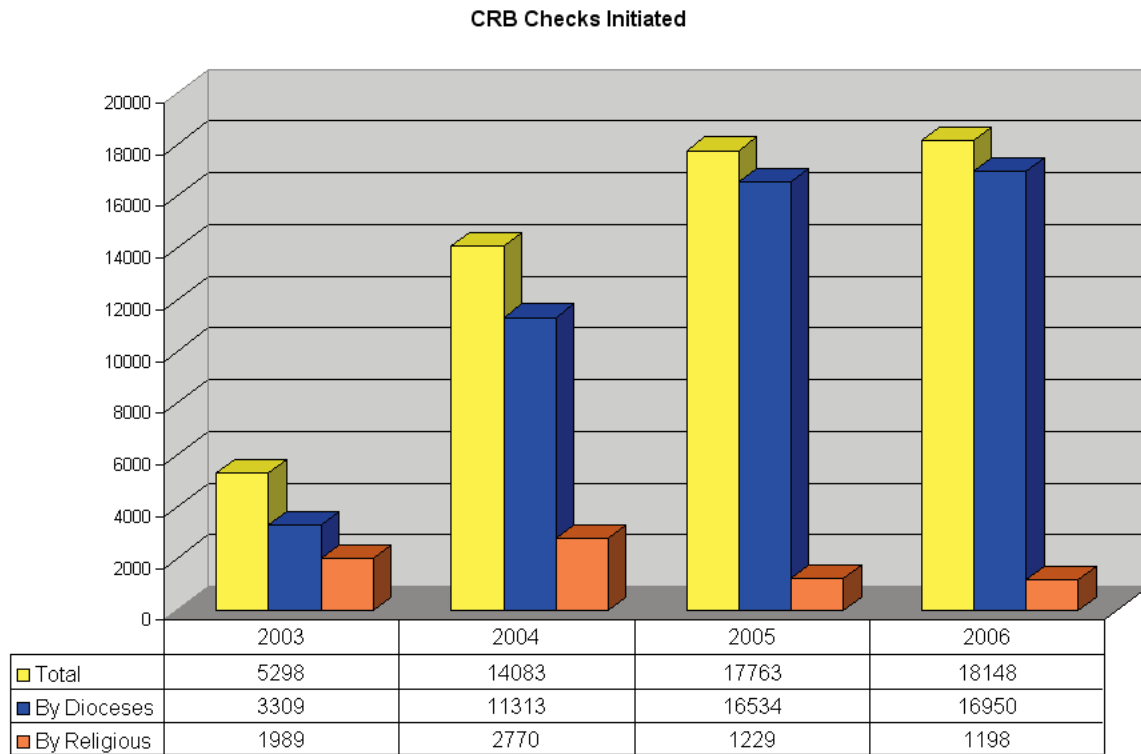
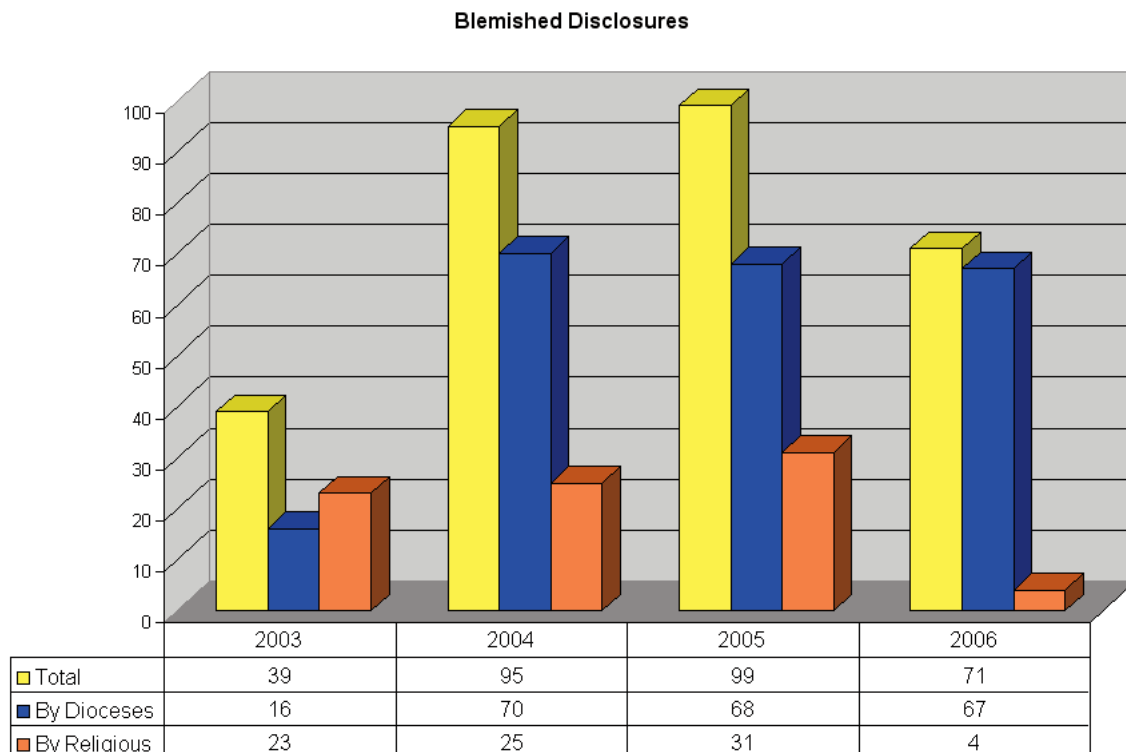


Figure 2



## section two

### 3. Training

Training is an essential element of an effective child protection system, in which a safe environment is created for vulnerable people involved in Church activities, so our efforts to ensure it is delivered are and will remain a permanent feature of this work.

In 2006, the existence of Training Plans is reported in 19 out of 20 Dioceses, and in 39 Religious Congregations.

Across Dioceses and Religious Congregations, about 440 training sessions were provided for over 5,200 participants by Child Protection Co-ordinators and Officers. These covered a wide range of topics related to child protection and the Church's policies in this area. Child Protection workers in Dioceses received 159 training sessions and 201 sessions were received in Religious Congregations.

## B. Responding To Allegations And Managing Risk

### Introduction and Summary of Allegations

The following figures relate to allegations of child abuse occurring in a Church setting only. Allegations made to Church representatives about cases of abuse within families and the wider community are referred on to Statutory Agencies (Police and Social Services Departments).

An allegation is a matter sufficiently serious to warrant reporting to the Statutory Authorities to allow them to consider whether an investigation is required, and whether they may have other information that would assist in evaluating the risk presented.

#### **NB**

The following tables report on the roles of those accused in three categories in order to simplify presentation of the data.

The three categories are: Clergy, Religious and Other, and the roles included in each category are:

**Clergy:** Secular/(Diocesan) Priests; Religious Priests; Transitional & Permanent Deacons; Secular (Diocesan)/Religious Clerical Students.

**Religious:** Male Religious (excluding Priests); Female Religious; Religious in Formation (male & female); Unidentified Religious.

**Other:** Volunteers; Employees; Parishioners.

## Guide to tables

<b>NUMBER OF ALLEGATIONS IN 2006</b>	<b>Total</b>	<b>41</b>
Reported by Dioceses	<b>Total</b>	<b>34</b> (see Table 7)
	Source of Report	See Table 5
	Concerning whom?	See Tables 3 & 7
	Action by Statutory Bodies	See Table 9
	Action by Church	See Table 10
Reported by Religious	<b>Total</b>	<b>7</b> (see Table 7)
	Source of report	See Page 25
	Concerning whom?	See Tables 3 & 7
	Action by Statutory Bodies	See Table 9
	Action by Church	See Table 10
<b>NUMBER OF VICTIMS</b>	<b>Total</b>	<b>43</b>
	Type of Abuse	See Table 6
	In Diocese or Religious Congregation?	See Table 6
	Role of Abuser	See Table 7
	Date of Abuse	See Table 8

In 2006, a total of 41 allegations were received, of all types of abuse and in relation to all Church roles. 34 occurred in a Diocesan setting and 7 were reported from Religious Congregations. This figure is unlikely to be an accurate reflection of the position in Religious Congregations because not all provided the information.

These cases involve 43 alleged victims.

20 allegations relating to Clergy were reported in 2006; with a further 6 allegations in relation to Religious and the remaining 15 against Others. (See Box on page 20 for Definitions) There are currently approximately 5,600 Clergy and 6,000 Religious in England & Wales.

Among the 41 allegations, 17 incidents of abuse were alleged to have taken place during 2006. Of these, 14 relate to sexual abuse, 6 of which relate to Clergy, 8 to Others (see Box on page 20 for Definitions). Of the remaining 3 incidents in 2006, 2 were of emotional abuse (both relating to Diocesan volunteers), and 1 incident of alleged physical abuse (against a female Religious).

**Table 3**

2006: Allegations of abuse by role of abuser and type of abuse – Combined Reports from Dioceses and Religious Congregations

<b>Role of Alleged Abuser</b>	<b>Sexual Abuse</b>	<b>Physical Abuse</b>	<b>Emotional Abuse or Neglect</b>	<b>Child Abuse Images</b>	<b>Total</b>
Secular / (Diocesan) Priest/s	14			1	<b>15</b>
Religious Priest/s	4				<b>4</b>
Transitional & Permanent Deacons	1				<b>1</b>
Secular (Diocesan) / Religious Clerical Student/s					<b>0</b>
Male Religious (excl priests)					<b>0</b>
Female Religious	1	5			<b>6</b>
Religious in Formation (male & female)					<b>0</b>
Unspecified Religious					<b>0</b>
Volunteer/s	8		2		<b>10</b>
Employee/s	2				<b>2</b>
Parishioner/s	3				<b>3</b>
<b>TOTAL</b>	<b>33</b>	<b>5</b>	<b>2</b>	<b>1</b>	<b>41</b>

NB: in 2 instances there were 2 victims of abuse in relation to only 1 abuser. See also Table 6, page 26

Figure 3 below summarises the trend in all reported allegations of abuse occurring in a Church context from 2004 to 2006. (Figures in 2003 were collected on a slightly different basis). Despite the absence of information from 2 of the 22 Dioceses in 2006, we are confident that the picture of declining numbers is a true one.

In comparing this information with Table 8, (page 28) it is apparent, for example, that the number of allegations relating to the 1970s and reported in recent years has decreased considerably from 45 in 2004, to 13 in 2005 and to 5 in 2006. For allegations relating to the 1990s, the figures are 20 in 2004, 9 in 2005 and 8 in 2006.

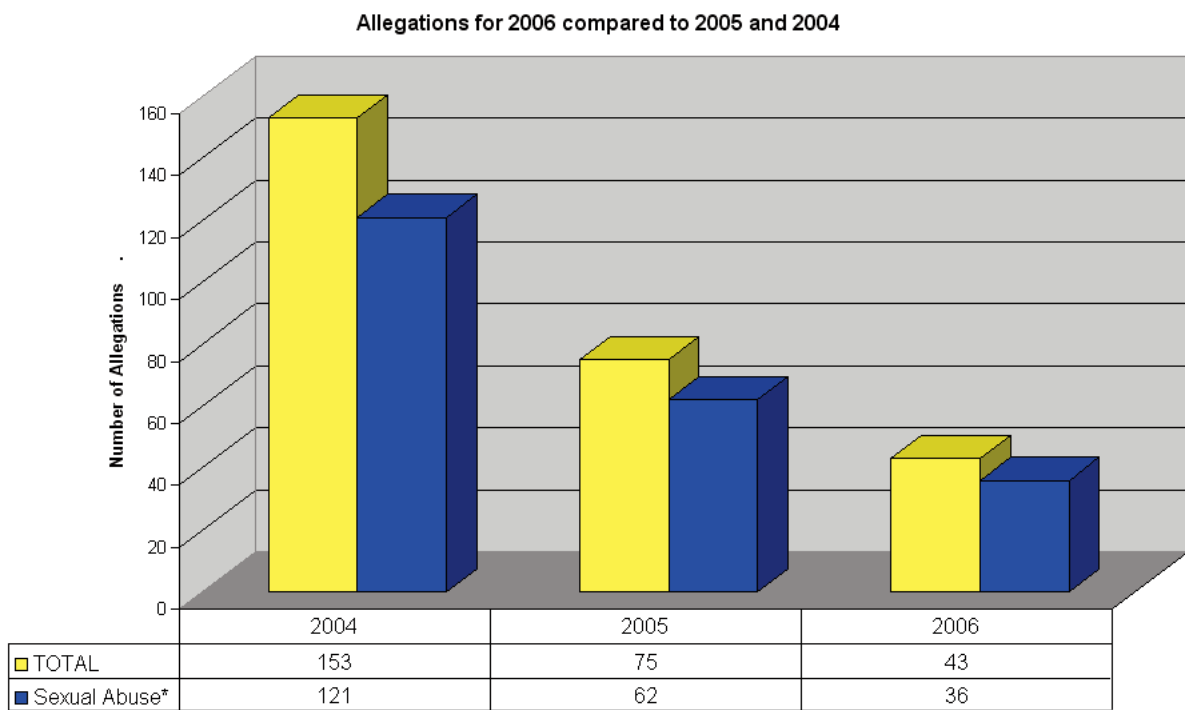
The number of allegations of sexual abuse – the highest number of allegations in each year – has also declined over time.

It may be, therefore, that a majority of those abused in the past who wish to inform the Church of their experiences have by now come forward, and that instances of abuse are now being reported much closer to the time the abuse has taken place.

If true, this is a positive demonstration that the system now in place works to better protect victims of abuse and to prevent further abuse.

Figure 3

Trend in Reported Allegations



\*includes allegations relating to child abuse images

## 2006 Statistics on Allegations Reported during 2006

Table 4 below gives information on incidents of abuse taking place in 2006 by the type of abuse and the role of the abuser.

**Table 4**

Summary of alleged abuse incidents **OCCURRING IN 2006** by type of abuse and role of alleged abuser (combined reports from Dioceses and Religious Congregations)

<b>Role of Alleged Abuser</b>	<b>Sexual Abuse</b>	<b>Physical Abuse</b>	<b>Emotional Abuse or Neglect</b>	<b>Child Abuse Images</b>	<b>Total</b>
Diocesan Priest	4				<b>4</b>
Religious Priest	2				<b>2</b>
Deacon					
Diocesan / Religious Clerical Students					
Religious Brother					
Religious Sister		1			<b>1</b>
Priest or Religious in Formation					
Unidentified Religious					
Volunteer	5		2		<b>7</b>
Employee	1				<b>1</b>
Parishioner	2				<b>2</b>
<b>TOTAL</b>	<b>14</b>	<b>1</b>	<b>2</b>		<b>17</b>

Of the 43 alleged victims in the reports made in 2006, 26 reported abuse incidents taking place prior to 2006, covering a period of 45 years (and involving some abusers who have since died or left the country). See Table 8, page 28 for further detail.

17 alleged victims reported abuse occurring in 2006. Of these, 14 relate to sexual abuse, 6 of which relate to Clergy, 8 to Others (see Box on page 20 for Definition).

The remaining 3 incidents in 2006 were of emotional abuse (2, both relating to Diocesan volunteers) and 1 incident of alleged physical abuse (against a female Religious).



**Table 5**

## Allegations Reported to Dioceses in 2006 by source of report

Source of Initial Information – per Diocesan Returns	Role of accused			Total
	Clergy	Religious	Other	
Alleged Victim	8	2	3	13
Third Party	6	0	2	8
Statutory Agency	4	0	0	4
Local Rep	0	0	4	4
Parish Priest	1	0	4	5
<b>Total Allegations</b>	<b>19</b>	<b>2</b>	<b>13</b>	<b>34</b>

The largest source of referrals in Dioceses, as in 2005, is the alleged victim, with third parties reporting as the next largest group and the Police informing the Church of some cases. Only 1 allegation was made by a parish priest in 2006, compared to 6 in 2005.

**Allegations Reported to Religious Congregations in 2006 by source of report.**

In 2006, of the 7 cases reported, 6 were made by a third party and 1 by a parish priest. In 2005, 5 reports were made by alleged victims, the largest group, 3 by third parties and 1 by the Police.

**Number of alleged victims by type of abuse in 2006 Reports compared to 2005 & 2004**

As in each of the previous years, the largest category of abuse by far is sexual abuse (81% of reported cases) with physical abuse at 10% of reported cases and emotional abuse/neglect making up only 2% of all cases. The number and proportion of cases involving child abuse images have gone down in 2006 compared to previous years.

**Table 6**

Type of abuse by number of alleged victims in 2006 compared to 2005 and 2004

Type of Abuse	2006			2005			2004					
	Total	Diocesan Reports	Religious Reports	%	Total	Diocesan Reports	Religious Reports	%	Total	Diocesan Reports	Religious Reports	%
Sexual Abuse	35	31	4	81	56	44	12	75	111	86	25	72
Physical Abuse	5	2	3	12	10	10	0	13	14	12	2	9
Emotional Abuse	2	2	0	5	1	0	1	1	6	2	4	4
Neglect	0	0	0	0	2	2	0	3	2	0	2	1
Child Abuse Images	1	1	0	2	6	6	0	8	10	9	1	7
Other									10	10	0	7
<b>TOTAL</b>	<b>43</b>	<b>36</b>	<b>7</b>	<b>100</b>	<b>75</b>	<b>62</b>	<b>13</b>	<b>100</b>	<b>153</b>	<b>119</b>	<b>34</b>	<b>100</b>

### Number of allegations by the role of the Alleged Abuser in 2006 Reports compared to 2005

The proportion of Clergy involved in reports made in 2006 has reduced from 70% in 2005 to 48% in 2006, which is more in line with 2004 figures (56%). Religious are involved in 15% of reports in 2006, up from 5% in 2005, also moving closer to 2004 figures (12%). Other groups (volunteers, employees and parishioners) are involved in 37% of reported cases in 2006, compared to 25% in 2005, and 32% in 2004 – a similar pattern of change for this group too.

**Table 7**

Allegations Reported by Dioceses and Religious Congregations in 2006 compared with 2005 and 2004

	2006				2005				2004			
	Total	Diocesan Reports	Religious Reports	%	Total	Diocesan Reports	Religious Reports	%	Total	Diocesan Reports	Religious Reports	%
Clergy	20	19	1	48	41	31	10	70	56	48	8	56
Religious	6	2	4	15	3	2	1	5	12	4	8	12
Other	15	13	2	37	15	15	0	25	32	32	0	32
	<b>41</b>	<b>34</b>	<b>7</b>	<b>100</b>	<b>59</b>	<b>48</b>	<b>11</b>	<b>100</b>	<b>100</b>	<b>84</b>	<b>16</b>	<b>100</b>

### Allegations reported in 2006: date alleged abuse occurred

During 2006, no incidents of alleged abuse were reported as occurring in 2005 or 2000. As in 2005 and 2004, no reports were received for the 1930s, and this year for the first time, none for the 1940s or the 1950s.

In 2006, the largest proportion of incidents were reported as dating from the current year, as was the case in 2005. The largest group in 2004 was for the 1970s; in 2006 there were only 5 allegations from the 1970s compared to 13 in 2005 and 45 in 2004.

In 2006 the largest group of allegations prior to 2006 relate to the 1990s and 1980s (8 and 6 respectively). These figures are also lower than in the past 2 years.

**Table 8**

Number of alleged victims in 2006 in Dioceses and Religious Congregations by date abuse occurred, compared to 2005 and 2004.

Year	2006			2005			2004		
	Total	Diocesan Reports	Religious Reports	Total	Diocesan Reports	Religious Reports	Total	Diocesan Reports	Religious Reports
<i>Date not known</i>	1	1	0	1	0	1	0	0	0
<i>2006</i>	17	14	3						
<i>2005</i>	0	0	0	21	21	0			
<i>2004</i>	1	0	1	1	1	0	37	34	3
<i>2003</i>	1	1	0	1	1	0	16	14	2
<i>2002</i>	1	1	0	0	0	0	3	2	1
<i>2001</i>	2	2	0	0	0	0	1	1	0
<i>2000</i>	0	0	0	0	0	0	1	1	0
<i>1990s</i>	8	8	0	9	8	1	20	18	2
<i>1980s</i>	6	6	0	16	14	2	10	8	2
<i>1970s</i>	5	3	2	13	11	2	45	27	18
<i>1960s</i>	1	0	1	4	2	2	11	10	1
<i>1950s</i>	0	0	0	8	3	5	5	3	2
<i>1940s</i>	0	0	0	1	1	0	4	1	3
<i>1930s</i>	0	0	0	0	0	0	0	0	0
<i>Pre 1930s</i>	0	0	0	0	0	0	0	0	0
<b>Total</b>	<b>43</b>	<b>36</b>	<b>7</b>	<b>75</b>	<b>62</b>	<b>13</b>	<b>153</b>	<b>119</b>	<b>34</b>

## Allegations reported in 2006: Summary of Actions taken by Statutory Authorities

In 2006, a similar proportion of cases were designated as “No Further Action” by Statutory Authorities (58% in 2006, and 62% in 2005).

The % of investigations in progress also remained static, (34% in 2006, 31% in 2005).

Only 1 case has reached a court hearing (3 in 2005), and there was 1 conviction in 2006 (None in 2005).

**Table 9**

### Allegations reported in 2006: Summary of Actions taken by Statutory Authorities

Action	Summary Info for 2006				Summary Info for 2005 (per 05 Report)			
	Total	Diocesan Report	Religious Reports	%	Total	Diocesan Reports	Religious Reports	%
Investigation initiated and in progress	14	12	2	34	18	17	1	31
Statutory Authorities - No Further Action	24	19	5	58.5	37	27	10	62
Police Caution / Warning	1	1	0	2.5	1	1	0	2
Court Hearing	1	1	0	2.5	3	3	0	5
Conviction	0	0	0	0	0	0	0	0
Sentence	1	1	0	2.5	0	0	0	0
<b>Total by Role of Alleged Abuser</b>	<b>41</b>	<b>34</b>	<b>7</b>	<b>100</b>	<b>59</b>	<b>48</b>	<b>11</b>	<b>100</b>

## Allegations reported in 2006: Summary of actions taken within the Church

**Table 10**

### Allegations Reported in 2006: Summary of Actions taken within the Church

#### i) Clergy

Action Taken	2006			
	Total	Diocesan Reports	Religious Reports	%
Awaiting outcome of Stat investigation	4	4	0	20
Admin leave, suspension, pending internal enquiries	7	7	0	35
Disciplinary procedures underway	0	0	0	0
Restricted, pending investigation	0	0	0	0
Risk Assessment	1	1	0	5
Risk Management in place	0	0	0	0
Reinstatement	2	1	1	10
Warning and Training	0	0	0	0
Restricted ministry / work with supervision	0	0	0	0
Dismissal, removal from office, post etc	0	0	0	0
Laicisation	0	0	0	0
Resigned	0	0	0	0
No Further Action	3	3	0	15
Deceased	3	3	0	15
<b>Total</b>	<b>20</b>	<b>19</b>	<b>1</b>	<b>100</b>

NB. 3 members of the Clergy have been reported to the POCA List in 2006 to ensure they cannot work with children in other settings.

**ii) Male & Female Religious**

Of the 6 alleged abusers, 1 is awaiting the outcome of a statutory investigation; 1 has been placed on restricted ministry pending investigation and 4 required no further action.

**iii) Volunteers**

Of the 10 alleged abusers, 2 are awaiting the outcome of statutory investigations; 3 have been suspended from their role pending investigation; 2 were reinstated and 3 dismissed from post.

**iv) Parishioners**

Of the 3 alleged abusers, 1 is awaiting the outcome of a statutory investigation; for 1 a risk management plan is in place, and 1 has received a warning and training.

**v) Employees**

Of the 2 alleged abusers, 1 is working with supervision and the other required no further action.

**Progress update on cases reported in 2005**

Of the 60 allegations reported in 2005, relating to 58 alleged abusers, information is available for only 53, in the 20 Dioceses that reported in 2006.

Only 5 are still under investigation by the Statutory Authorities. Of the remainder, 10 are deceased, the whereabouts of 1 is unknown, 2 have resigned, 9 have been dismissed or removed from their post, (including one who has been laicised), 2 are subject to disciplinary procedures, 8 are working with supervision/restricted ministry, 1 has been warned and 11 have been reinstated. The remaining 4 are temporarily removed from their role pending risk assessment/further enquiries.

**Temporary Removal from Role (Administrative Leave)**

In 2006, for the first time, we have sought information about the number of Clergy and Religious across England and Wales who have been temporarily removed from their role under canonical procedures, and who remain in that position as at 31st December 2006, irrespective of the date the procedure was originally initiated. The total number reported is 17 across 20 out of 22 Dioceses. Reliable information on this point is not available in 2006 in respect of Religious Congregations.

# copca's aims for 2007

The highest priorities for COPCA's work during 2007 will be:

- To continue to work in close collaboration with Dioceses, Religious Congregations and Seminaries, through national meetings with Child Protection Commission Chairs and Child Protection Co-ordinators and Officers. Our focus will be on moving forward the action plans arising from the first self-audit.
  
- To continue our support for Regional Religious Commissions and to the Conference of Religious in ensuring that all Religious Congregations are attached to a Child Protection Commission.
  
- To continue supporting the implementation of the policy on Creating a Safe Environment in particular through the development of the Parish Pack.
  
- To move forward in reaching a resolution of the canonical issues that are in progress currently, in order to remove any perception that the work of child protection is inconsistent with Canon Law requirements.
  
- To begin the process of auditing CRB procedures.
  
- To begin to work on implementing the recommendations of the Cumberlege Commission, which is expected to report by Autumn of 2007. This will include our approach to achieving best practice in relation to the protection of Vulnerable Adults, and a review of the existing policies and procedures in the light of new legislation and government guidance, with a view to simplifying their structure and content.

# Appendices appendix one

## The COPCA management board

### Profile of members

The Management Board is chaired by the Archbishop of Birmingham, the Most Rev Vincent Nichols, and consists of the following members:

- Terry Bamford OBE, Director of Social Perspectives Network, Deputy Chair of Stonebridge Housing Action Trust and chair of the Russian European Trust. Non-Catholic.
- Rev Tim Bryan, National MAPPA Co-ordinator, National Offender Management Service; member of the Nolan Review Committee. Anglican Priest. (Resigned July 2006)
- Sr Jane Bertelsen, Conference of Religious in England and Wales Executive member
- Fr Stanislaus Neild OH, Hospitaller Order of St John of God
- The Right Reverend Kevin Dunn, Bishop of Hexham and Newcastle
- Fr Jonathan Mitchell, nominee of the National Conference of Priests
- Prof. Peter Gilbert, Professor in Social Work and Spirituality, Staffordshire University. Catholic.
- Enid Hendry, Head of Child Protection Training, NSPCC. Non-Catholic.
- Mgr Jack Kennedy, formerly Child Protection Co-ordinator, Liverpool Diocese; member of the Nolan Review Committee
- Helen Kenward, independent child protection consultant. Non-Catholic.
- Bernadette Cawley, solicitor. Catholic

### In attendance

- Eileen Shearer, Director, COPCA.
- Adrian Child, Assistant Director, COPCA.
- Charles Wookey, Assistant General Secretary, Catholic Bishops' Conference of England and Wales.
- Alexander DesForges, Head of News, Catholic Communications Network.

### Finance Sub-Committee

**Chair** Terry Bamford, Vice Chairman of COPCA Management Board

#### Membership

Dr Jim Whiston	Finance Secretary, Diocese of Middlesbrough
Sr Meg Walshe	Bursar, Society of the Sacred Heart (resigned March 2006)
Fr Stanislaus Neild, OH	Hospitaller Order of St John of God

#### In attendance

Eileen Shearer	Director, COPCA.
Maureen Lucht de Freibruch	Director of Finance, Catholic Trust for England and Wales
Sarah Pearson	Management Accountant, Catholic Trust for England and Wales
Sally Sanderson	Business Manager, COPCA



# appendix two

## **COPCA Staff**

### **Director**

Eileen Shearer Appointed January 2002

### **Assistant Director**

Adrian Child Appointed September 2006

### **PA to the Director**

Claire Johnson Promoted June 2005 from Team Secretary

### **Business Manager**

Sally Sanderson Appointed June 2005

### **Team Secretary (part time)**

Sophie Robbins Appointed May 2006

In May 2006 we welcomed Sophie Robbins to the COPCA Team as a part time Team Secretary; in September Adrian Child joined COPCA as Assistant Director and we said a sad farewell to Chris Stewart, with thanks to her for her help in keeping the COPCA duty system going during the two years without permanent professional staff in the COPCA Team.

# appendix three

## Working Group Members

### Vulnerable adults

#### Chair

**Trevor Stockton, Consultant**

#### Membership

Brother John Martin OH  
Anthea Beeks

Provincial, Hospitaller Order of St John of God  
Director, Community Services, Hospitaller Order of St John of God  
(resigned May 2005)

Martin Hirst  
Ann Harris  
Fr Frank Daly  
Sr Marianne Donnelly

Director, Catholic Care, Diocese of Leeds  
Operations Manager, Birmingham Health and Social Care  
Parish Priest of St Peter's, Hinckley (Nottingham Diocese)  
Conference of Religious CHS Co-ordinator (resigned May 2005)

### Audit Standards Working Group

#### Chair

Terry Bamford, Vice Chair of COPCA Management Board

#### Membership

Eileen Shearer  
Sr Raymunda Jordan OP  
Brian Kelly  
Fr Anthony Skillen  
Vincent Rice  
Helen Sheppard  
Pauline Butterfield  
Sally Sanderson

Director of COPCA  
Advisor, Assistant Congregation Leader  
Child Protection Co-ordinator, Brothers of Charity  
Child Protection Co-ordinator, Marist Fathers  
Child Protection Officer, Hexham & Newcastle Diocese  
Child Protection Officer, Southwark Archdiocese  
Child Protection Co-ordinator, Shrewsbury Diocese  
Business Manager, COPCA

### National Policy on Roles Requiring CRB Disclosure

Pauline Butterfield  
Patricia Gilligan  
Keith McDonogh

Child Protection Co-ordinator, Shrewsbury Diocese  
Child Protection Officer, Salford Diocese  
Child Protection Co-ordinator, Wrexham Diocese

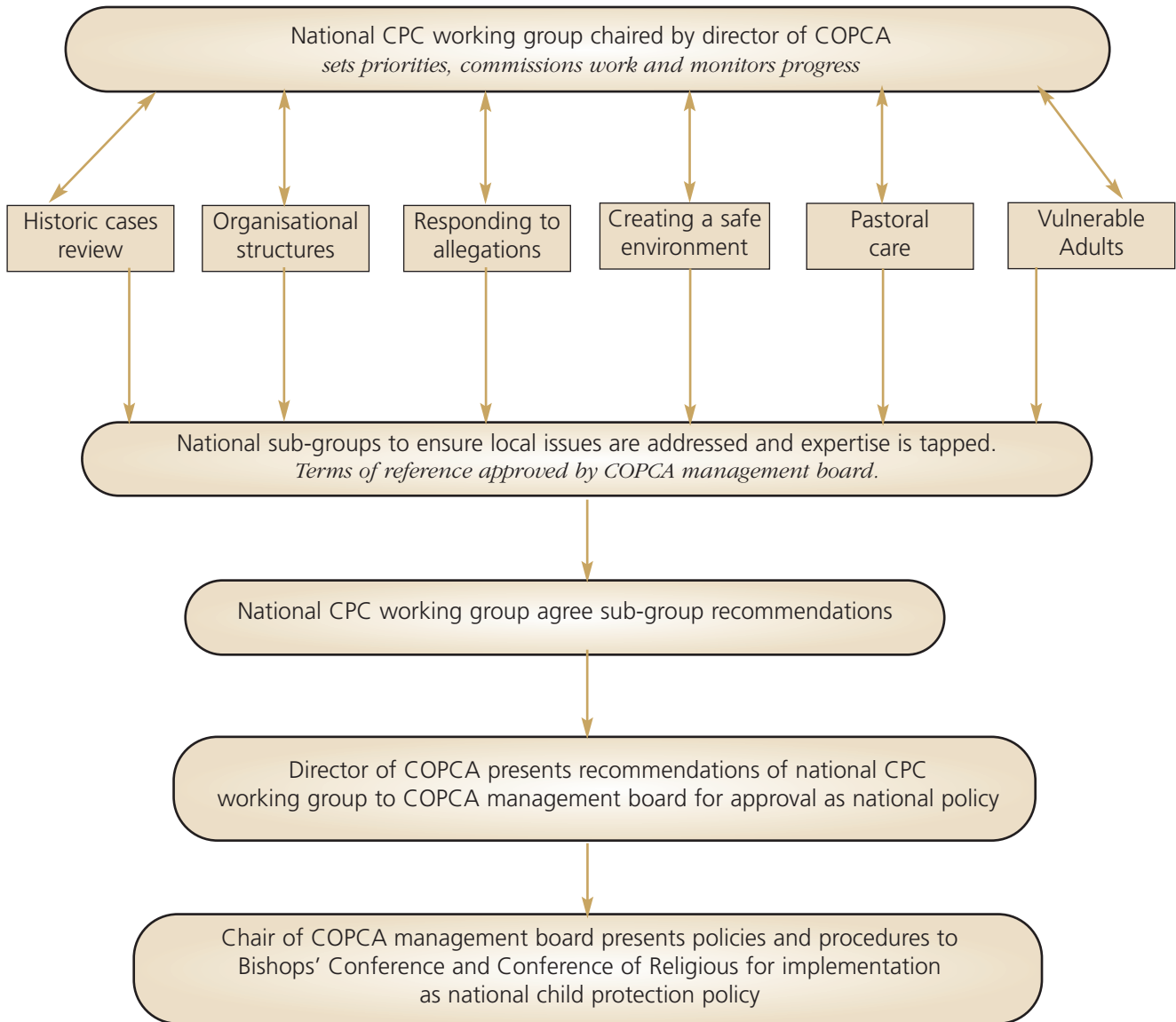
### Cross-Boundary Placement Policy

Nick Reynolds  
Jane Jones  
Pauline Butterfield

Child Protection Co-ordinator, Portsmouth Diocese  
Child Protection Co-ordinator, Birmingham Archdiocese  
Child Protection Co-ordinator, Shrewsbury Diocese

# appendix four

## National policy development process



# appendix five

## COPCA accounts 2006

In preparing the COPCA budget for 2007 a 5% reduction was achieved across the board, in line with requirements on all Bishops' Conference departments and agencies. The independence of COPCA's management and finance has continued to be a matter of discussion and debate between the COPCA Management Board and CaTEW.

	2006	2005
Staff Costs	193,586	200,660
Recruitment and Training	5,905	2,571
Travel and subsistence	13,792	11,625
Conferences and meetings	43,146	10,121
Property costs	34,474	33,176
Office costs <sup>1</sup>	41,542	50,544
Professional fees and legal advice	9,789	3,871
Depreciation	23,192	26,818
<b>Total Costs</b>	<b>365,426</b>	<b>339,385</b>
<b>Financed by:</b>		
Diocesan Assessments	312,721	303,613
Diocesan Assessments re 2002		
Other donations and grants	5,007	285
Other income		
.. Contribution from Conference of Religious	40,170	39,000
.. Conferences	39,408	7,027.
.. Other	114	
<b>Total Income</b>	<b>397,420</b>	<b>349,925</b>
<b>Surplus / (Deficit)</b>	<b>31,994</b>	<b>10,540</b>
Surplus brought forward previous year	83,189	72,649
Refund to Dioceses/COR	-60,000	
<b>Total surplus</b>	<b>55,183</b>	<b>83,189</b>
Fixed assets	107,268	105,934
Plus additions <sup>2</sup>	4,726	1,334
Cumulative Depreciation	-107,783	-84, 591
<b>Net Book Value</b>	<b>4,211</b>	<b>22,677</b>

<sup>1</sup> Please note the there is a nominal variance of £8 against Office Costs for 2005 compared to the published 2005 Annual Report. This is in respect of a manual accounting adjustment in respect of postage. The Total Costs figure therefore has been adjusted accordingly and the Surplus figures are amended accordingly.

<sup>2</sup> £1334 appears in 2005 against Additions which should have appeared in the published 2005 Annual Report accounts. The Net Book Value therefore is adjusted accordingly also.